

Actiontec[®]

Wireless
Bluetooth Headset

User Manual


Table of Contents

1	Introduction	1
	Package Contents	1
	Features	2
	Putting On the Headset	2
2	Using the Wireless Headset	5
	Charging the Battery	5
	Turning the Headset On/Off	5
	Pairing the Headset	6
	Handling Calls	7
	Connecting to a Computer	8
	Connecting to Other Devices	10
3	Troubleshooting	11
	Notices	13
	Regulatory Compliance Notices	13
	Modifications	13
	Limited Warranty	15

Introduction

1

Thank you for purchasing the *Actiontec* Wireless Bluetooth Headset. The Headset allows the user to communicate between various Bluetooth devices, including cellular phones, personal digital assistants, and laptop computers, using advanced voice-recognition technology.

 **Important!** Please read this entire chapter. It contains important information regarding the Bluetooth Headset.

Package Contents

- *Actiontec* Wireless Bluetooth Headset
- Power Adapter
- Installation mini-CD (include User Manual)
- Earpads
- Quick Start Guide
- Accessory bag

Features

The Headset features two buttons (Large and Small), which have various functions, as well as two lights (LEDs), red and blue.



Putting On the Headset

You can wear the Wireless Bluetooth Headset on either ear. The ear brace is detachable from the earpiece section of the Headset. Simply remove it from the Headset and set it in the appropriate direction to fit your ear.



Technical Support

Actiontec Electronics prides itself on making durable, high-quality, high-performance products. If you need assistance, the *Actiontec* Technical Support Department is available 24 hours a day, seven days a week, to provide professional support.



Actiontec Electronics, Inc.

760 N. Mary Avenue
Sunnyvale, CA 94085

Technical Support

Phone: 1-888-436-0657

E-mail: http://support.actiontec.com/email_support/support_form.php

Internet: www.actiontec.com/support

Using the Wireless Headset

2

This chapter contains instructions on how to use the Headset, including charging the Battery and connecting to a Bluetooth-enabled cellular phone.

Charging the Battery

The rechargeable battery included with the Headset is not fully charged when new, and must be recharged before using. Recharging the first time takes approximately 4 hours; afterwards, each full battery recharge will take approximately 2 hours. A fully charged battery will provide approximately 3 to 4.5 hours of talk time, and 100+ hours of standby time. To recharge the battery:

1. Plug the battery charger into a wall outlet. The green light on the charger will illuminate.
2. Connect the other end of the battery charger into power port on the bottom of the Headset. A click is heard when the charger is properly inserted in the power port, and the red light on the charger will illuminate.
3. When the battery is full, the red light will turn off.

Turning the Headset On/Off

Turning On

To turn the Headset on, press and hold the Large Button for three seconds. Two short, high-pitched tones will sound, then the blue light on the Headset will illuminate. The Headset is now turned on.



Note: If the Headset's rechargeable battery is low, the red light on the Headset will flash.

Turning Off

To turn the Headset off, press and hold the Large Button for three seconds. Two short, low-pitched tones will sound, then the red light will flash. When it stops flashing, the Headset is turned off.

Pairing the Headset

To use the Headset with a cellular phone, it must be paired with the phone. To do this:

- 1.** Press the **Large Button** for 5 seconds. Two high-pitched tones will sound, followed by two more tones, and then the red and blue lights will flash.
- 2.** Initiate the pairing procedure on the Bluetooth-enable cellular phone to pair with the Headset. Make sure the cellular phone is in “Discovery” mode.
- 3.** Place the Headset one to three feet from the cellular phone.
- 4.** When the cellular phone requests a passkey, enter **1234** (the default PIN of the Headset). When pairing is successful, the red light will turn off, and the blue light will illuminate.

If the pairing fails, the Headset will turn off automatically after two minutes.

About Pairing

Pairing is the process of associating Bluetooth devices with each other. When two devices are paired, they establish a permanent, secure link with each other, enabling quick access to services provided without having to enter passwords every time either device is activated.

Paired devices remain paired even when one of the devices is not powered up, the service connection is stopped or interrupted, or one or both of the devices are rebooted.

Handling Calls

Once the Headset is successfully paired with a cellular phone, you can use it to make and receive calls. If your cellular phone supports voice dialing, you can perform this with the Headset.

Making Calls

There are two ways to make a call using the Headset: keying in the number on the cellular phone dial pad, or using voice dialing (if the cellular phone supports this feature).

Using the Dial Pad

To use the dial pad on the cellular phone, dial the phone number. Once the call is placed, the conversation will be carried by the Headset.

Using Voice Dialing


To use voice dialing, press the **Large Button** until a beep is heard. Say the name of the person to be called. The call is placed.

Answering/Ending Calls

When an incoming call is received, a beep is heard, and the blue light will flash quickly. To answer:

1. Press the **Large Button**.
2. If needed, adjust the volume. Press the Large Button to increase the volume; press the Small Button to decrease the volume.
3. To end the call, press the **Small Button** for three seconds, or do nothing. After 10 seconds, the Headset will automatically disconnect.

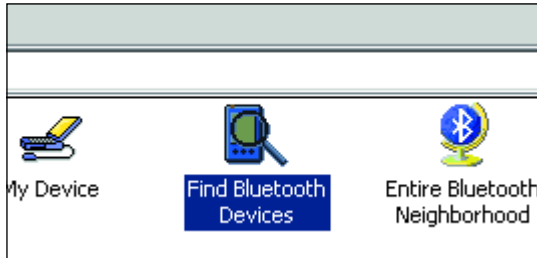
If the Headset is powered off and an incoming call is received, press the **Large Button** for three seconds to answer the call.


 **Note:** Due to the design of some cellular phones, the Headset may auto-disconnect even if it is powered on, and will not beep when receiving an incoming call. To reconnect the Headset to the cellular phone, press the Large Button for one second.

Connecting to a Computer

To connect the Headset to a computer, the computer must be Bluetooth-enabled (i.e., support Bluetooth internally or have a Bluetooth adapter installed). The computer must also support Audio Gateway Profiles.

1. Press the **Large Button** for 5 seconds. Two high-pitched tones will sound, followed by two more tones, and then the red and blue lights will flash.
2. On the computer, open the **Bluetooth Configuration** screen and double-click **Find Bluetooth Devices**.

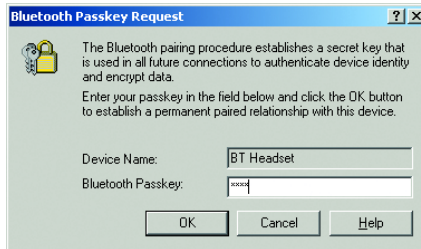


 **Note:** The Bluetooth Configuration setup may differ based on the brand of the Bluetooth adapter you are using.

3. Place the Headset firmly in either ear.
4. On the computer, Right-click on the **CSR-bc2** icon. From the menu that appears, select **Pair Device**.



5. A new window appears, requesting a passkey to connect to the Headset. Enter 1234, then press **OK**.



6. The **Headset** icon turns green.



7. A series of tones will sound. Press any button on the Headset.
8. On the computer, go to the Control Panel (select **Start** on the desktop, then **Control Panel** from the menu that appears) and select **Sounds and Audio Devices** or **Multimedia**.
9. In the next window, select **Audio**. In both the "Sound Playback" and "Sound Recording" sections, click the down arrows and select **Bluetooth Audio** from the lists that appear.
10. Click **OK**. The Headset is successfully connected to the computer.

Connecting to Other Devices

To connect the Headset to another type of device (a PDA, for example), the device must support Audio Gateway Profiles. Refer to the user manual of the other device to set up the Headset.

Troubleshooting

3

This chapter details problems that may occur when using the Headset, and possible solutions.

The Red Light is flashing. What does this mean?

When only the Red light is flashing, the Headset's rechargeable battery is running low. Plug the Headset into a wall outlet via the power adapter and recharge the battery. Full recharge takes approximately two hours.

I charged the Headset's battery for 20 minutes, but it still doesn't work. What can I do?

The Headset's rechargeable battery must be charged for at least 40 minutes before it can be used. It is recommended, however, that the battery be charged for the full two hours.

I plugged the Headset into an electrical socket, but it doesn't appear to be recharging. What's going on?

If the Headset hasn't been used for a long time, or the battery is nearly empty, it may take a few minutes for the Red Light to flash and indicate that it is recharging.

I am getting no sound between the Headset and the device it's connected to. What should I do?

Check the following:

- Make sure the Headset and the device have been paired.
- Make sure the Headset is turned on.
- Make sure the Headset and the device are within working range of each other.
- If connecting to a cellular phone, make sure it has good signal strength.
- Some cellular phones support only one Bluetooth headset at a time. Disconnection can occur if more than one Headset is being used.

My Headset connects fine, but disconnects 2 to 5 minutes after connecting. What should I do?

Make sure that you have fully upgraded the Windows operating system. You can do this by finding the Windows Update button in the Start menu. Download any DirectX or Media Updates available.

My computer says that it is connected to the Bluetooth Headset, but I'm not getting any sound through it. What should I do?

Make sure that you have pressed one of the buttons on the Headset to finish the connection process, and changed the Audio Device to the Bluetooth Adapter in Windows (see “Connecting to a Computer” on page 8 for more details).

Notices

Regulatory Compliance Notices

Class B Equipment

This equipment has been tested and found to comply with the limits for a Class B digital device, pursuant to Part 15 of the FCC Rules. These limits are designed to provide reasonable protection against harmful interference in a residential installation. This equipment generates, uses, and can radiate radio frequency energy and, if not installed and used in accordance with the instructions, may cause harmful interference to radio communications. However, there is no guarantee that interference will not occur in a particular installation. If this equipment does cause harmful interference to radio or television reception, which can be determined by turning the equipment off and on, the user is encouraged to try to correct the interference by implementing one or more of the following measures:

- Reorient or relocate the receiving antenna;
- Increase the separation between the equipment and receiver;
- Connect the equipment to an outlet on a circuit different from that to which the receiver is connected;
- Consult the dealer or an experienced radio or television technician for help.

Modifications


The FCC requires the user to be notified that any changes or modifications made to this device that are not expressly approved by *Actiontec Electronics, Inc.*, may void the user's authority to operate the equipment.

Declaration of conformity for products marked with the FCC logo – United States only.

This device complies with Part 15 of the FCC Rules. Operation is subject to the following two conditions:

1. This device may not cause harmful interference;

2. This device must accept any interference received, including interference that may cause unwanted operation.

 **Note:** To comply with FCC RF exposure compliance requirements, the antenna used for this transmitter must be installed to provide a separation distance of at least 20 cm from all persons and must not be co-located or operating in conjunction with any other antenna or transmitter.

For questions regarding your product or the FCC declaration, contact:

Actiontec Electronics, Inc.
760 North Mary Ave.
Sunnyvale, CA 94086
United States
Tel: (408) 752-7700
Fax: (408) 541-9005

Limited Warranty

Hardware: *Actiontec* Electronics, Inc., warrants to the end user (“Customer”) that this hardware product will be free from defects in workmanship and materials, under normal use and service, for twelve (12) months from the date of purchase from *Actiontec* Electronics or its authorized reseller.

Actiontec Electronics’ sole obligation under this express warranty shall be, at *Actiontec*’s option and expense, to repair the defective product or part, deliver to Customer an equivalent product or part to replace the defective item, or if neither of the two foregoing options is reasonably available, *Actiontec* Electronics may, in its sole discretion, refund to Customer the purchase price paid for the defective product. All products that are replaced will become the property of *Actiontec* Electronics, Inc. Replacement products may be new or reconditioned. *Actiontec* Electronics warrants any replaced or repaired product or part for ninety (90) days from shipment, or the remainder of the initial warranty period, whichever is longer.

Software: *Actiontec* Electronics warrants to Customer that each software program licensed from it will perform in substantial conformance to its program specifications, for a period of ninety (90) days from the date of purchase from *Actiontec* Electronics or its authorized reseller. *Actiontec* Electronics warrants the media containing software against failure during the warranty period. The only updates that will be provided are at the sole discretion of *Actiontec* Electronics and will only be available for download at the *Actiontec* Web site, www.actiontec.com. *Actiontec* Electronics’ sole obligation under this express warranty shall be, at *Actiontec* Electronics’ option and expense, to refund the purchase price paid by Customer for any defective software product, or to replace any defective media with software which substantially conforms to applicable *Actiontec* Electronics published specifications. Customer assumes responsibility for the selection of the appropriate applications program and associated reference materials. *Actiontec* Electronics makes no warranty or representation that its software products will meet Customer’s requirements or work in combination with any hardware or applications software products provided by third parties, that the operation of the software products will be uninterrupted or error free, or that all defects in the software products will be corrected. For any third-party products listed in the *Actiontec* Electronics software product documentation or specifications as being compatible, *Actiontec* Electronics will make reasonable efforts to provide compatibility, except where the non-compatibility is caused by a “bug” or defect in the third party’s product or from use of the software product not in accordance with *Actiontec* Electronics published specifications or user guide.

THIS ACTIONTEC ELECTRONICS PRODUCT MAY INCLUDE OR BE BUNDLED WITH THIRD-PARTY SOFTWARE, THE USE OF WHICH IS GOVERNED BY A SEPARATE END-USER LICENSE AGREEMENT.

THIS ACTIONTEC ELECTRONICS WARRANTY DOES NOT APPLY TO SUCH THIRD-PARTY SOFTWARE. FOR THE APPLICABLE WARRANTY, PLEASE REFER TO THE END-USER LICENSE AGREEMENT GOVERNING THE USE OF SUCH SOFTWARE.

Obtaining Warranty Service: Customer may contact *Actiontec Electronics* Technical Support Center within the applicable warranty period to obtain warranty service authorization. Dated proof of purchase from *Actiontec Electronics* or its authorized reseller may be required. Products returned to *Actiontec Electronics* must be pre-authorized by *Actiontec Electronics* with a Return Merchandise Authorization (RMA) number marked on the outside of the package, and sent prepaid and packaged appropriately for safe shipment, and it is recommended that they be insured or sent by a method that provides for tracking of the package. The repaired or replaced item will be shipped to Customer, at *Actiontec Electronics*' expense, not later than thirty (30) days after *Actiontec Electronics* receives the defective product.

Return the product to:
(In the United States)
Actiontec Electronics, Inc.
760 North Mary Avenue
Sunnyvale, CA 94085

Actiontec Electronics shall not be responsible for any software, firmware, information, memory data, or Customer data contained in, stored on, or integrated with any products returned to *Actiontec Electronics* for repair, whether under warranty or not.

WARRANTIES EXCLUSIVE: IF AN ACTIONTEC ELECTRONICS' PRODUCT DOES NOT OPERATE AS WARRANTED ABOVE, CUSTOMER'S SOLE REMEDY FOR BREACH OF THAT WARRANTY SHALL BE REPAIR, REPLACEMENT, OR REFUND OF THE PURCHASE PRICE PAID, AT ACTIONTEC ELECTRONICS' OPTION. TO THE FULL EXTENT ALLOWED BY LAW, THE FOREGOING WARRANTIES AND REMEDIES ARE EXCLUSIVE AND IN LIEU OF ALL OTHER WARRANTIES, TERMS OR CONDITIONS, EXPRESS OR IMPLIED, EITHER IN FACT OR BY OPERATION OF LAW, STATUTORY OR OTHERWISE, INCLUDING WARRANTIES, TERMS OR CONDITIONS OF MERCHANTABILITY, FITNESS FOR A PARTICULAR PURPOSE, SATISFACTORY QUALITY, CORRESPONDENCE WITH DESCRIPTION, AND NON-INFRINGEMENT, ALL OF WHICH ARE EXPRESSLY DISCLAIMED. ACTIONTEC ELECTRONICS

Limited Warranty

NEITHER ASSUMES NOR AUTHORIZES ANY OTHER PERSON TO ASSUME FOR IT ANY OTHER LIABILITY IN CONNECTION WITH THE SALE, INSTALLATION, MAINTENANCE OR USE OF ITS PRODUCTS.

ACTIONTEC ELECTRONICS SHALL NOT BE LIABLE UNDER THIS WARRANTY IF ITS TESTING AND EXAMINATION DISCLOSE THAT THE ALLEGED DEFECT OR MALFUNCTION IN THE PRODUCT DOES NOT EXIST OR WAS CAUSED BY CUSTOMER'S OR ANY THIRD PERSON'S MISUSE, NEGLIGENCE, IMPROPER INSTALLATION OR TESTING, UNAUTHORIZED ATTEMPT TO OPEN, REPAIR OR MODIFY THE PRODUCT, OR ANY OTHER CAUSE BEYOND THE RANGE OF THE INTENDED USE, OR BY ACCIDENT, FIRE, LIGHTNING, OTHER HAZARDS, OR ACTS OF GOD.

LIMITATION OF LIABILITY: TO THE FULL EXTENT ALLOWED BY LAW, *ACTIONTEC ELECTRONICS* ALSO EXCLUDES FOR ITSELF AND ITS SUPPLIERS ANY LIABILITY, WHETHER BASED IN CONTRACT OR TORT (INCLUDING NEGLIGENCE), FOR INCIDENTAL, CONSEQUENTIAL, INDIRECT, SPECIAL, OR PUNITIVE DAMAGES OF ANY KIND, OR FOR LOSS OF REVENUE OR PROFITS, LOSS OF BUSINESS, LOSS OF INFORMATION OR DATA, OR OTHER FINANCIAL LOSS ARISING OUT OF OR IN CONNECTION WITH THE SALE, INSTALLATION, MAINTENANCE, USE, PERFORMANCE, FAILURE, OR INTERRUPTION OF ITS PRODUCT, EVEN IF *ACTIONTEC ELECTRONICS* OR ITS AUTHORIZED RESELLER HAS BEEN ADVISED OF THE POSSIBILITY OF SUCH DAMAGES, AND LIMITS ITS LIABILITY TO REPAIR, REPLACEMENT, OR REFUND OF THE PURCHASE PRICE PAID, AT *ACTIONTEC ELECTRONICS'* OPTION. THIS DISCLAIMER OF LIABILITY FOR DAMAGES WILL NOT BE AFFECTED IF ANY REMEDY PROVIDED HEREIN SHALL FAIL OF ITS ESSENTIAL PURPOSE.

Disclaimer: Some countries, states or provinces do not allow the exclusion or limitation of implied warranties or the limitation of incidental or consequential damages for certain products supplied to consumers, or the limitation of liability for personal injury, so the above limitations and exclusions may be limited in their application to you. When the implied warranties are not allowed to be excluded in their entirety, they will be limited to the duration of the applicable written warranty. This warranty gives you specific legal rights which may vary depending on local law.

Dispute Resolution: The customer may contact the Director of Technical Support in the event the Customer is not satisfied with *Actiontec Electronics'* response to the complaint. In the event that the Customer is still not satisfied with the response of the Director of Technical Support, the Customer is instructed to contact the Director of Marketing. In the event that the Customer is still not satisfied with the response of the Director of Marketing, the Customer is instructed to contact the Chief Financial Officer and/or President.

Governing Law: This Limited Warranty shall be governed by the laws of the State of California, U.S.A., excluding its conflicts of laws and principles, and excluding the United Nations Convention on Contracts for the International Sale of Goods.